

MECEDORA // ROCKING CHAIR. SCHAUKELSTUHL. SEDIA A DONDOLO. FAUTEUIL À BASCULE



0,56 m³ - 19,77 ft³ 15,25 Kg - 33,55 lbs

COLCHONETA. MAT

náutica
crevin (duo). sunbrella (solids. sling)

Fabricada con perfilera de aluminio soldado termolacado y polietileno 100% reciclable. Gomaespuma de poliuretano recubierta con tejido hidrófugo. Tapicería desenfundable. NOTA: No se admiten medidas especiales en esta colección. Made of thermo-lacquered aluminium profiles and 100% recyclable polyethylene. Polyurethane foam rubber covered with water-repellent fabric. Removable fabric cover. NOTE: No special sizes available in this collection.

Hergestellt aus geschweißten thermolackierten Aluminiumprofilen und 100% recycelbarem Polyethylen. Polyurethanschaum mit wasserabweisendem Stoff überzogen. Abziehbarer Bezug. ANMERKUNG: Keine Sondermasse in dieser Kollektion möglich.

Realizzata in profilato di alluminio termolaccato, e polietilene 100% riciclabile. Gommapiuma di poliuretano rivestita di tessuto idrofugo. Tappezzeria sfoderabile. NOTA: In questa collezione non sono ammesse misure speciali.

Fabriquée avec un profilé en aluminium soudé et thermolaqué et en polyéthylène 100% recyclable. Mousse caoutchouc en polyuréthane recouverte de tissu hydrofuge. REMARQUES : mesures spéciales non admises dans cette collection.

COMBINACIONES ESTÁNDAR. STANDARD COMBINATIONS. STANDARD-KOMBINATIONEN. COMBINAZIONI STANDARD. COMBINAISONS STANDARD.



Estructura: Blanco
Frame: White
Profil: Weiß
Struttura: Bianco
Structure: Blanc

Polietileno: Blanco
Polyethylene: White
Polyethylen: Weiß
Polietilene: Bianco
Polyéthylène: Blanc



Estructura: Arena
Frame: Sand
Profil: Sand
Struttura: Sabbia
Structure: Sable

Polietileno: Arena
Polyethylene: Sand
Polyethylen: Sand
Polietilene: Sabbia
Polyéthylène: Sable



Estructura: Bronce
Frame: Bronze
Profil: Bronze
Struttura: Bronzo
Structure: Bronze

Polietileno: Bronce
Polyethylene: Bronze
Polyethylen: Bronze
Polietilene: Bronzo
Polyéthylène: Bronze



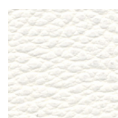
Estructura: Antracita
Frame: Anthracite
Profil: Anthrazit
Struttura: Antracite
Structure: Anthracite

Polietileno: Antracita
Polyethylene: Anthracite
Polyethylen: Anthrazit
Polietilene: Antracite
Polyéthylène: Anthracite



Colores disponibles en tapicería. Available colours for the upholstery.

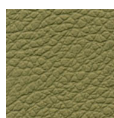
NÁUTICA (VINYL)



Blanco
White



Crudo
Crude



Arena
Sand



Bronce
Bronze



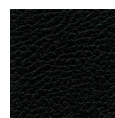
Marrón
Brown



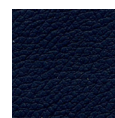
Wengue
Wengue



Gris
Grey



Negro
Black

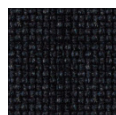


Marino
Marine

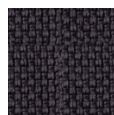
CREVIN DUO



01



55



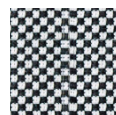
53



51



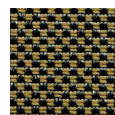
54



03



14

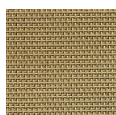


11

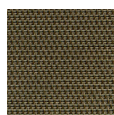
SUNBRELLA SLING



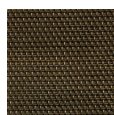
Snowy



Sand



Taupe

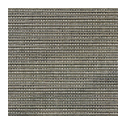


Cocoa



Charcoal

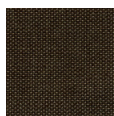
SUNBRELLA SOLIDS



Shingles



Navy Blue



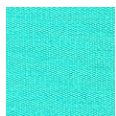
Mink brown



Charcoal



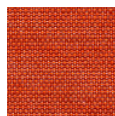
Natural



Aruba



Green Taupe



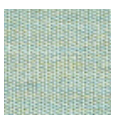
Terra Orange



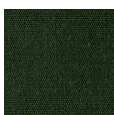
*Canvas



*Carbon



*Spa



*Pologreen

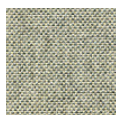


*Aubergine

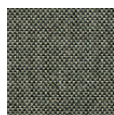
SUNBRELLA NATTÉ



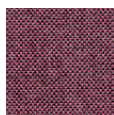
* Frosty
Chiné



* Carbon
Beige



* Dark
Taupe



* Dark
Pink

* Sólo disponible para cojines.

* Only available for cushions.



G A N
D I A
B L A
S C O

GANDIA BLASCO S.A.

Músico Vert 4 46870 Ontinyent Valencia Spain T. +34 96 291 13 20. +34 902 530 302 F. +34 96 291 30 44. +34 902 530 304
gandiablasco@gandiablasco.com www.gandiablasco.com www.lacasagandiablasco.com